

Town of Cable Outdoor Recreation Plan

April, 2018



2018-2023

Prepared by 2018 Town Board and Plan Commissioners with citizen input

Information also prepared with information from the Bayfield County Outdoor Recreation Plan of 2015-2019, the Town of Cable's Comprehensive Land Use 2010 Plan, and data from the Cable Area Chamber of Commerce.

Table of Contents:

Plan Approval (Resolution).....	2
Introduction.....	3
Summary of Past Plans.....	4
Description of Planning Region - Social and Physical Characteristics.....	6
Outdoor Recreation Needs Assessment.....	8
Outdoor Recreation Inventory.....	9
Plan Recommendations.....	11
Appendix.....	15

Resolution

ADOPTING THE TOWN OF CABLE COMPREHENSIVE OUTDOOR RECREATION PLAN

WHEREAS, Town of Cable, has developed a comprehensive outdoor recreation plan; and
WHEREAS, this plan outlines foreseeable outdoor recreation facility needs of the Town of Cable that can be adequately maintained; now THEREFORE, BE IT RESOLVED that the Town of Cable Board of Supervisors hereby formally adopt the Town of Cable Comprehensive Outdoor Recreation Plan as the official policy statement for the development of outdoor recreation programs and facilities in the Town of Cable.

Introduction

The 2012 Town of Cable Comprehensive Land Use Plan identifies this Vision Statement for Agricultural, Natural, and Cultural Resources: The Town of Cable will retain its small town character by promoting a continued mix of open and natural areas, and lakeshore development. Development will be in harmony with the natural environment to ensure these resources are protected for future generations.

Cable, Wisconsin is located in Bayfield County, the second largest county in Wisconsin, and has a total area of 71.4 square miles and contains an abundance of land (69.3 square miles) and water (2.0 square miles) recreational resources. Cable is located 17 miles north of Hayward. As of the census of 2010, there are 825 people, 412 households, and 231 families residing in town.

This plan will serve as a guide for the development of existing and future outdoor recreation areas and facilities in the Town to meet the recreational needs of its residents and visitors. Development and adoption of this recreation plan will enable Cable to be eligible to apply for a number of outdoor recreational grant programs.

The Cable Area is a popular four-season family vacation destination in northwest Wisconsin with a variety of lodging rentals, recreational activities and sporting events. The area is an outstanding setting for outdoor enthusiasts and offers healthy lifestyle opportunities for area residents and business owners. There are a wide variety of recreational opportunities for fitness education and recreation on our multiple trail systems. The area attracts vacationers and visitors for hiking, biking, running, snowmobiling, ATVing, cross country skiing, snowshoeing, boating, kayaking, hunting, fishing, and more. The Cable Area has become the go to travel destination, an outdoor center for adventure, fitness, races, nature and wildlife, recreation, learning and art, and a very desirable retirement community.

The overall goal of the Town of Cable's Comprehensive Outdoor Recreation Plan is as follows:

Goal

Provide a guide for the development of outdoor recreation areas and facilities in the Town of Cable to meet the outdoor recreational needs of the town's residents and visitors.

In order to help attain this goal, a number of plan objectives have been identified, including:

Objectives

1. Identify the outdoor recreational needs in the Town.
2. Promote the development and maintenance of quality recreation areas, parks and facilities in the Town.
3. Support all forms of recreation opportunities in the Cable Area; Support existing and create new, economically viable and environmentally sustainable events in the Cable Area; Support the quality of life in Cable with community-engaging events, activities, and practices.
4. Partner with other governmental and regional entities within the town, county, and state, as well as private businesses when appropriate -to provide areas and facilities for recreational activities.
5. Help protect important aesthetic and environmental resources in the county for recreational uses through acquisition, easements and zoning.
6. Provide opportunities to apply for federal and state grant funding programs for outdoor recreation areas and facilities.

Past Plans

Past Comprehensive Outdoor Recreation Plans for the Town of Cable were part of the Bayfield County Recreation Plan and were adopted by the Bayfield County Board in 1981, 1990, 1995, 2006, and 2015. The 1981 and 1990 plans were drafted by Northwest Regional Planning Commission; the 1995 County plan was written entirely by the Bayfield County Tourism Department; and the 2006 County plan was written by the Tourism Department and the Bayfield County University of Wisconsin Extension. Bayfield County also created a Recreation Plan in 2015. Until now, the Town of Cable has relied on these County Recreation Plans. However, The Town of Cable has determined that it would be beneficial to develop its own set of goals and objectives to focus its efforts on enhancing current recreation and invest in future recreation activities in the town.

Description of Planning Region – Social and Physical Characteristics

SOCIAL CHARACTERISTICS

Adapted from Bayfield County's Outdoor Recreation 2015-2019 Plan:

The estimated 2005 population of Bayfield County is 15,666. This is up 653 from the 2000 census of 15,013. The overall increase in population from 2000 to 2005 was 4.3 percent. The largest gains in population occurred in the towns of Russell, Bayfield and Iron River; and all but five municipalities, including the county's largest municipality, the City of Washburn, added population. The median age in Bayfield County is 42.1, indicating an older population than the State of Wisconsin, which has a median age of 36.0 years. The history of northern Wisconsin is much like that of the rest of the Upper Great Lakes Region. Logging, mining and agriculture were the basis of the first period of rapid growth. With the decline of these extractive industries came declines in population. In Bayfield County, the population never again reached the peaks attained in 1920 near the end of these early industrial booms. Many years of decline ensued before the rise of the tourism and recreation industry brought new growth. The importance of recreation is clearly shown in the 2000 Census data on recreational homes. Over 40 percent of the county's homes are recreational.

PHYSICAL CHARACTERISTICS

Adapted from the Town of Cable's Comprehensive Land Use 2010 Plan:

The Town of Cable is geographically located in the northern highland province of Wisconsin and lies a short distance south of the Great Divide that separates the St. Lawrence and Mississippi River Drainage Systems. The most distinguishing landscape characteristics of the Town are the glacial lakes set in hilly conifer and hardwood forests. Picturesque hills, scenic wild rivers and streams, spruce bogs, and scattered farmlands add variations to the landscape. The Namekagon River Valley is a dominant landscape feature. The development of cottages, resorts, and homes have not yet reduced the shoreline scenic qualities on all the lakes; however, several of the larger lakes, first settled over 100 years ago, show signs of aesthetic deterioration.

Continental glaciation is responsible for the present topography of Bayfield County. Where the ice stopped, it deposited terminal moraines - huge accumulations of rock, gravel, sand, and clay pushed along by or carried on the front of the ice sheet. One of these terminal moraines was deposited between two lobes of the Lake Wisconsin Ice Sheet along the western border of Bayfield County. The resulting topography is decidedly rugged and is distinguished in the hills south of the

Namekagon River from former Telemark Resort to U.S. Highway 63. Lakes and swamps occupy many of the deeper kettle holes and many of the lakes in Bayfield County are in this glaciated area. Ground moraine forms the greater part of the topography. This was deposited in a broad sheet by the ice, which melted away beneath it; and the present surface is rolling with low ridges and shallow depressions, occupied by swamps rather than lakes.

Igneous and metamorphic rocks of Precambrian age underlie Bayfield County. The principal surface deposits are glacial drift and alluvial sand and gravel. It varies in thickness throughout the county ranging from a few feet to 250 feet.

Outdoor Recreation Needs (Demand) Assessment

Adapted from Bayfield County's Outdoor Recreation 2015-2019 Plan

Demand for outdoor recreation is dependent on many variables, but one of the most significant is a locality's population, which includes those who reside in a jurisdiction and those who visit. In 2000, Bayfield County had a resident population of 15,013. In 2005, the county's resident population grew to an estimated 15,666, a 4.3 percent increase in five years. However, the county's peak population estimate for a single day in the summer of 2006 was 45,329, almost three times the resident population. This population figure includes: 15,666 residents, 7,350 lodgers filling all the hotel/motel rooms, campground sites, and recreation/educational camps, 19,968 second homeowners and 2,345 day trip visitors. Thus, one can see that in a jurisdiction like Bayfield County which has a lot of tourists and visitors, demand for outdoor recreation increases considerably over and above the needs of the resident population. The various characteristics of the population also can have a significant impact on the demand for outdoor recreation. These could include: age, gender, income, education, employment, marital status, and vacation time. Changing social and economic trends are also important variables that affect outdoor recreation demand. Other factors that can influence demand include: the weather, fuel costs, state of the economy, popularity of competing outdoor recreational locations, and quantity and quality of the available outdoor recreation facilities. Activities in northwest Wisconsin and Bayfield County that continue to remain popular include: hunting, fishing, hiking, sightseeing, road and mountain bicycling, picnicking, wildlife and bird watching, camping, swimming and boating. During the winter months, cross-country skiing, snowmobiling are extremely popular with ATVing and snowshoeing steadily gaining popularity. Accessibility to top quality, well maintained trails and facilities is an important factor in people's decisions about where to travel in the winter months, along with having a variety of restaurants and attractions to complete the experience. Demand for most of the outdoor recreational activities identified above is expected to continue to grow. Vacationers to Bayfield County and second home use will continue to increase. As the baby boom generation continues to retire in ever greater numbers in the coming years, this will accelerate the development of seasonal and second homes in the county. Also, as the population ages, concerns about the accessibility of the county's outdoor recreational facilities to persons with mobility and other physical limitations become ever more important.

TOWN OF CABLE'S NEEDS ASSESSMENT RECAP

Two public forums were held in summer of 2017 to conduct a needs assessment of Recreation for the Town of Cable. Many of the results of this are in the goals and recommendations listed in the Plan Recommendations section of this plan.

Outdoor Recreation Supply Inventory

The Town of Cable benefits from enormous access to public lands available for outdoor recreation including numerous high quality waterways. Lake Totogatic is all in public ownership and is managed as a natural area for wildlife by the Wisconsin Department of Natural Resources. The Namekagon River was one of the eight original rivers to be designated as a protected area by the National Wild and Scenic Rivers Act of 1968, which made the Namekagon part of the St. Croix National Scenic Riverway. The National Park Service maintains waysides on the river within the Town of Cable, including one on County Highway M, Telemark Road, Randysek Road and one on State Highway 63.

Bayfield County Forestry Department manages, conserves, and protects forest resources of the County Forest, some of which are located in the Town of Cable. Multiple use management of these resources provides a wide variety of forest products and amenities for current and future generations through the use of sustainable forest management practices. A rustic yurt has been developed to offer camping in a primitive forest setting. The County also manages multi-use trails, firewood permits, and hunting. There are 850,000 acres of Federally-owned Chequamegon-Nicolet National Forest surrounding our community.

The Town of Cable maintains a Recreational Park located ½ mile west of Cable. The Town also maintains the Cable Community Centre and Cable Town Trails, which have over two miles of hiking, fat biking, and snowshoeing trails. The Cable Area Chamber of Commerce and Visitor Center serves visitors to the region. A municipal parking area and public restroom in downtown Cable serves as a Chequamegon Area Mountain Bike Association trailhead and parking for overnight bikers and recreational users (not for camping overnight.) The Cable Union Airport is owned by three adjacent towns and serves as a recreational fly-in site.

The town maintains public landings at Perry, Cable, and Tahkodah lakes and protects our water resources with grant and matching funds from the DNR's Clean Boats, Clean Waters Program. Water recreation includes canoeing, kayaking, waterskiing, tubing, boating, fishing, swimming, and beautiful viewing opportunities.

Other accessible recreation resources include the Chequamegon Area Mountain Biking Association (CAMBA) mountain bike trails, American Birkebeiner ski trails and trailhead, Cable Rod and Gun Club, North End Ski and Snowshoe trails, County snowmobile trails, ATV/UTV trails maintained by the Great Divide ATV Club, and Telemark Golf Course. The Cable Natural History Museum offers field trips, exhibits and programs to regional natural areas. In addition, there are hundreds of miles of low-traffic paved and gravel roads for recreation uses.

Located in the heart of the 850,000 acre Chequamegon-Nicolet National Forest and thousands of acres in Bayfield County Forest, the Cable Area is a mecca for all things trail-related. Hiking,

mountain biking, ATV, snowmobile, snowshoe and cross country ski trails create an intertwining trail system that is nationally known.

The Cable Area has a long and rich history of cross country skiing dating to the early 1970s and has attained a position of national prominence. The American Hiking Society named the Cable Area a "Trail Town USA, and with regard to cross country skiing, Cable has also been cited by CNN.com Travel as one of the: "Top 5 Best Places to Hit the Horizontal Slopes."

The CAMBA mountain bike trail have been honored with several national distinctions, including an Epic Trail designation and also Bronze Level Ride Center designation, both by the International Mountain Bike Association.

Current trail status includes: 1,200 miles snowmobile trails, 94 miles cross country ski trails, 400+ miles mountain bike trails, 150+ miles ATV/UTV routes, and 125 miles hiking and snowshoe trails. World-class events such as the American Birkebeiner and Chequamegon Fat Tire Festival are held in the Cable community.

Plan Recommendations

Plan Recommendations:

- Create a checklist for event’s organizers to assist them in creating and implementing quality events in the Cable community.
- When possible, consider reconstruction of roads at a 22-foot width to accommodate recreational users.
- Partner with user groups to create more unity in order to gain access to private land.
- Partner with all user groups to improve or maximize signage and directional maps.
- Assess feasibility of development of a family friendly, disabled accessible trail, perhaps on the railroad right-of-way or other appropriate location.
- Develop an app or other means of communication to provide all recreation users with maps, information on closures, etc.
- Develop a means to market and communicate all Cable Area Events and activities through an online calendar through the Forest Lodge Library.
- Assess ways to connect event planners to local businesses to provide and maximize services and activities for event participants.
- Assess and support the potential for development of new and additional recreational opportunities at Telemark Resort.

TOWN OF CABLE AREA RECREATIONAL PARK

(located ½ mile west of Cable)

Existing Facilities:

Ball fields and bleachers	Picnic areas
Playground equipment	Restrooms
Historic Railroad Depot	Shelter 40’ x 90’
Tennis courts	Basketball court
Covered pavilion	Skateboard park



Recommended Improvements:

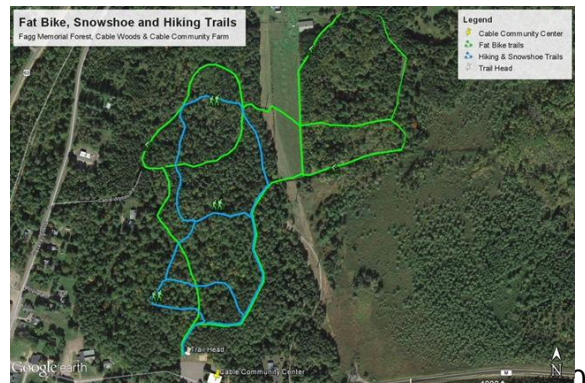
- Assess feasibility of a dog park area.
- Evaluate feasibility for primitive or contemporary camping facilities
- Upgrade electric in pavilion
- Maintain ball fields
- Maintain historic railroad depot as funds are available

CABLE TOWN TRAILS

(at Cable Community Centre)

Existing Facilities:

Hiking trails	Snowshoe trails
Fat bike trails	



- Assess and improve signage at the landing.
- Seek public use easement with adjoining landowners to the south to improve fishing and recreation opportunities.

Cable Lake Recommended Improvements:

Continue to protect water resource with Clean Boats, Clean Waters Program to prevent aquatic or terrestrial invasive species.

Install a paddlesports “soft landing” for non-motorized sports.

Assess and improve signage at the landing.

Tahkodah Lake Recommended Improvements:

Continue to protect water resource with Clean Boats, Clean Waters Program to prevent aquatic or terrestrial invasive species.

Assess feasibility and; install a paddlesports_-“soft landing” for non-motorized sports.

Partner with Tahkodah Lake District on recreation issues of significance.

Assess and improve signage at the landing.

TOTOGATIC LAKE

Lake Totogatic is all in public ownership and is managed as a natural area for wildlife by the Wisconsin Department of Natural Resources.

CABLE AREA CHAMBER OF COMMERCE & VISITOR CENTER

Existing Facilities:

Area maps/information	Restrooms
Benches	Drinking fountain

Recommended Improvements:

Install bike racks at chamber, community center and throughout the downtown area.

Assess and develop recreationally themed aesthetic enhancements throughout the downtown area.

CABLE UNION AIRPORT

Existing Facilities:

3,700 foot paved runway	2,000 foot turf runway
Airplane hangars	Terminal
Fueling	Tie Downs
Airport Courtesy Car	Pilot Weather Computer

Recommended Improvements:

Assess ways to maximize airport for recreational use.

Continue to provide courtesy car for pilots use in community.

Work with community to market activity events and recreational activities.

Maximize usage with fly-ins.

Convey ownership through sale of property that Cable Rod and Gun Club maintains.

MUNICIPAL PARKING LOT

Existing Facilities:

Day and overnight Parking

Public Restroom

Recreational Users Trailhead

Recommended Improvements:

Develop pathways from the Municipal Parking Lot and throughout the town to encourage walking and "workout walkways."

Maintain the Parking Lot as a Recreational Users Trailhead and install a kiosk for recreational users to promote their activities.

Install bike racks in parking lot.

FACILITIES IN TOWN OF CABLE SPONSORED BY OTHER ORGANIZATIONS/GOVERNMENTAL BODIES

ST. CROIX NATIONAL WILD & SCENIC RIVERWAY, NAMEKAGON RIVER ACCESS WAYSIDES ON HIGHWAY 63 AND RANDYSEK RD.

The Namekagon River was one of the eight original rivers to be designated as a protected area by the National Wild and Scenic Rivers Act of 1968, which made the Namekagon part of the St Croix National Scenic Riverway.

Existing Facilities:

Canoe landings

Tubing

Fishing

Recommended Improvements:

Partner with U.S. Park Service to offer recreational opportunities.

Work with the U.S. Park Service to reroute snowmobile corridor to avoid private land.

Assess feasibility of development of recreation corridor on River Road on Big Brook River, near Randysek Road to Telemark Road, and portions of the abandoned railroad grade south and north of Cable.

BAYFIELD COUNTY FOREST

Existing Facilities:

North End Ski and snowshoe trails

American Birkebeiner trails and trailhead

ATV trails/routes

Snowmobile trails

Trails

Camping in rustic yurt

CAMBA bike trails

Winter Fat Bike

Hunting

Firewood permits



